

# OFFICE FOR LEASE



**17826 Edison Ave., Ste. A**  
Chesterfield, MO 63005

Size: 7,330 +/- SF

Type: Office

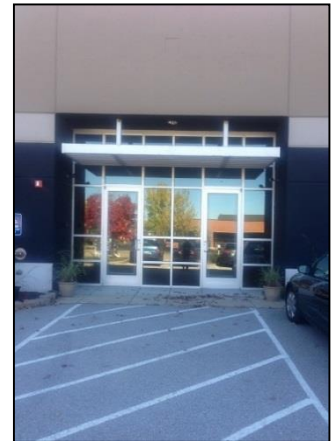
Lease Rate

**\$15.00 psf; FS**

**Plus utilities**

## Highlights

- 7,335 +/- Office Space
- Flexible / Open Floor Plan
- Ample Parking
- Multiple Private Offices & Work Room w/ Newer Office Finish
- Additional Offices Can Be Added
- T-I Available



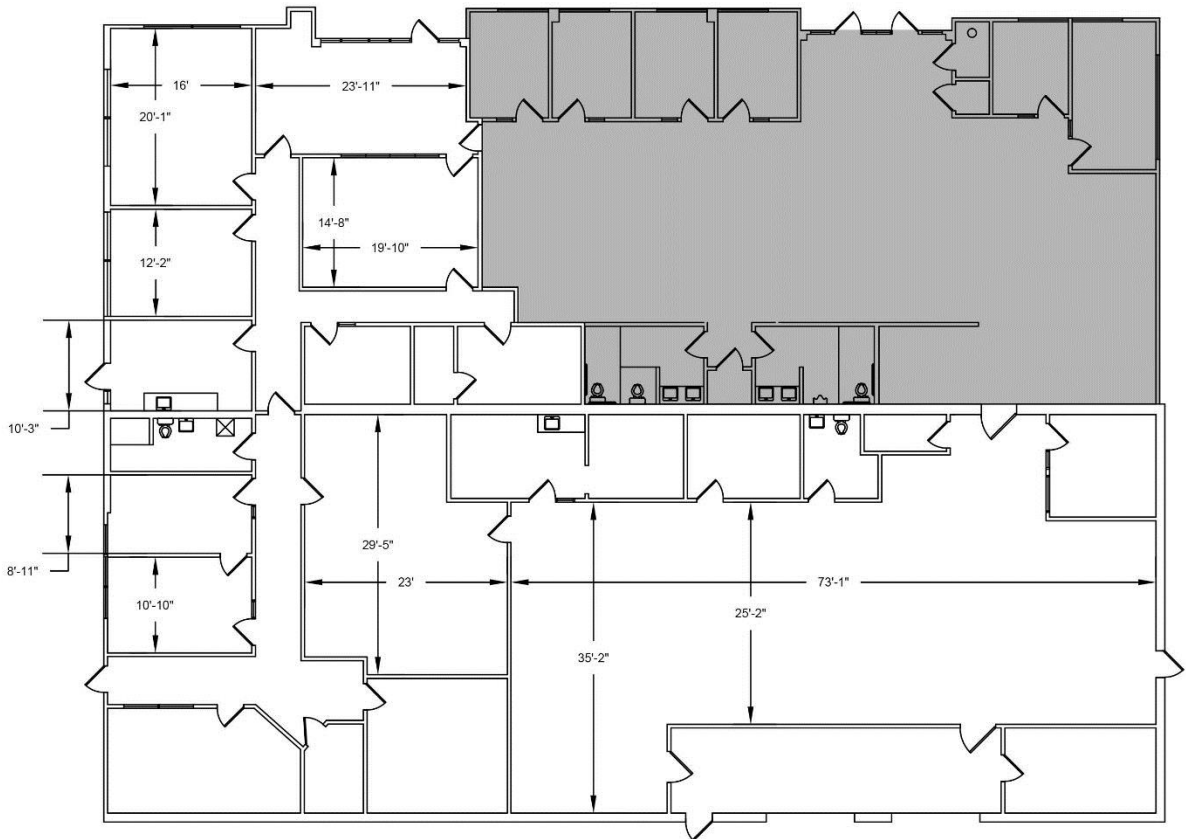
For more information contact :

**Mark Zvibleman** P: (314) 878-0303  
C: (314) 503-3344  
mark.zvibleman@svn.com

**17826 Edison Ave., Suite A**  
Chesterfield, MO 63005



17826 Edison Ave  
Chesterfield, MO  
**7335 SF**



For more information contact :

**Mark Zvibleman**

P: (314) 878-0303

C: (314) 503-3344

[mark.zvibleman@svn.com](mailto:mark.zvibleman@svn.com)